



The Ark Federation

FEDERATION NEWSLETTER

ISSUE NUMBER 8
November 2023

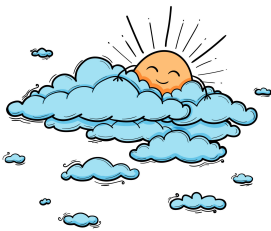


'Tis (almost) the season to be jolly!

We are on the countdown to Christmas at both Ark schools, with the first festive events just two weeks away. Please make sure that you have read the Christmas calendars for your school and made note of all the important dates. We kick off with Decoration Day at the start of December, where parents are invited to join their children to create a host of Christmas decorations and gifts.

The WONDERFUL Ark Nurseries

This term across both nurseries our focus is on 'Celebrations', we have had lots of fun already celebrating bonfire night, learning how to keep safe when watching firework displays. We celebrated Diwali, the festival of light, learning how people from other religions and countries celebrate their festivals. We got the opportunity to make our very own Diya lamps and make naan bread. We celebrated friendship as part of anti-bullying week, where we learned what it means to be kind towards others and what makes a good friend. We also took part in remembrance day, creating our very own poppies! We are all very excited to continue our celebrations in the lead up to Christmas!



Moorlands News

This year Moorlands are working towards becoming a School of Sanctuary. Our school will become a welcoming and inclusive culture for all students and families. We are focusing on supporting refugees and asylum seekers. As a school we had a day dedicated to raising awareness for refugees, we asked the children to think about what five items they would take with them if they had to flee their homes. The children had great empathy skills, to be able to think of others. We had a range of items bought in including toothbrushes, reading books, blankets and photos of special people in our lives.

Mrs Larkin, our School of Sanctuary lead said "It was a lovely day across the school, I heard lots of insightful conversations from the children about each of their five items and it's amazing to see how much care the children of Moorlands have for other people."

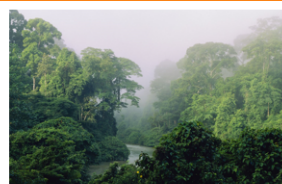


Peterhouse News

Our Houses are back up and running at Peterhouse and it's already shaping up to be a closely run contest! Last year's School Council members were very keen to get House Points going again and came up with an abundance of great ideas for new House names, which they then put to the polls by asking classes to vote on their favourites. The most popular choices were linked to habitats and so our new House names came to be as follows:



red – Savannah



green – Rainforest



blue – Tundra



yellow – Desert

How does it work? Every time the children earn a Dojo point for themselves, they also earn a point for their House, and every week, this year's School Council members help me (Mr Richards) add up the totals, which they then announce in our Friday Awards Assembly!

Attendance

As an Academy we are committed to ensure all our pupils attend school regularly. We hope that we can rely on the support from all our Parents/Carers to encourage their child/children to be in school regularly and on time.

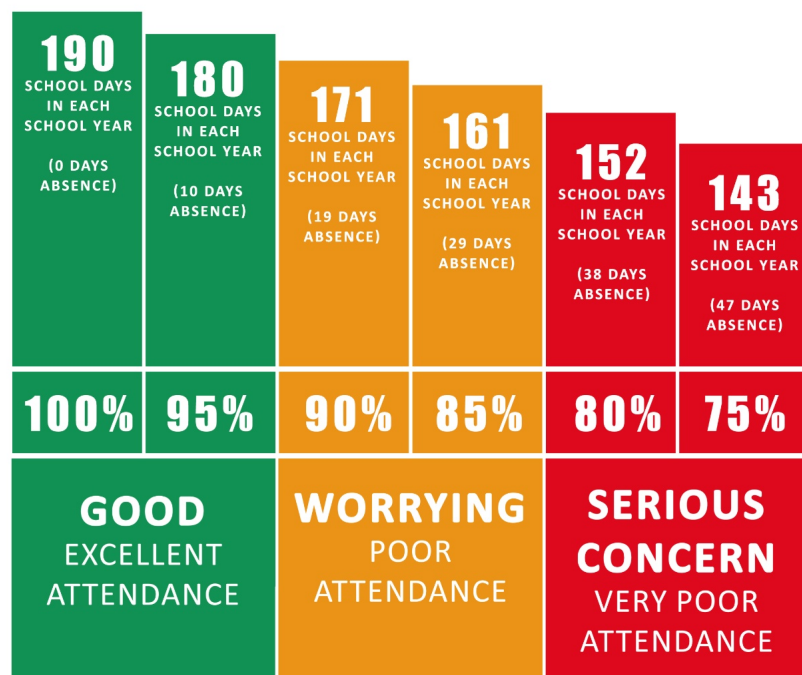
Peterhouse current whole school attendance is 94.5%, a little lower than our target of 96%.

Moorlands current whole school attendance is 93.5%, let's all work hard to increase this percentage.



ATTENDANCE MATTERS

EVERY SCHOOL DAY COUNTS



DON'T MISS OUT ON THE EDUCATION YOU DESERVE!

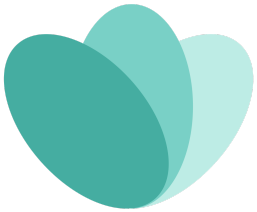


School Dog

Check out the School Dog Blog: <http://theark.dneat.org/school-dog/>

Lily produces a blog when she is in school, often with photos of her exploits - why not check it out.

Parent Support



Any parents looking to save a little money, or the planet might want to take a look at the Too Good To Go app.

Too Good To Go allows you to purchase mystery bags of food and grocery items from a number of well known retailers at reduced prices. The idea being that they can cut down on food waste by selling off stock that is perfectly safe to eat but close to its sell by date. Participating retailers include Morrisons, Toby Carvery, Greggs Bakeries, Bushells Bakeries and many more.

What Parents & Carers Need to Know about NETFLIX

Netflix is a subscription-based streaming service that allows users to watch TV shows and movies on any internet-enabled device that supports the software, such as smart TVs, phones and tablets. The pandemic saw a surge in children consuming on-demand content as many families relaxed their screen-time rules. Netflix's diverse range of programming caters for all age groups – so it's important for parents to recognise the potential risks of children using the service and the measures to help their child enjoy a safe streaming experience.

INAPPROPRIATE CONTENT

Netflix produces and curates an extensive catalogue of content that can provide hours of entertainment. If they share the same user account as an adult, this can potentially lead to children accidentally viewing all manner of inappropriate content, including nudity, profanity and extreme violence. This can happen easily on shared accounts, as Netflix cannot establish who's watching.

BINGE-WATCHING

Netflix allows users to view shows and movies quickly and easily without adverts or interruptions, making excessive screen time a concern. Binge-watching has become more common during the pandemic, due to Netflix's regularly updated content and algorithms which recommend content very similar to what's previously been enjoyed. Marathon viewing sessions can lead to children staying up too late, affecting their mood and concentration the next day.

SCREEN ADDICTION

From TVs and phones to consoles and tablets, Netflix is available on almost any device with an internet connection – making it extremely difficult to manage children's screen time. The service is now adding games to its mobile app, tempting users to spend even more time on the platform. Screen addiction can distract children from important activities like schoolwork and socialising, and can impact their health by reducing their exercise and sleep.

HACKING ATTEMPTS

With millions of users worldwide, Netflix is often targeted by hackers who try to steal usernames and passwords to gain access to people's accounts. If successful, they can then steal payment details or try to sell stolen personal data on the dark web, providing other criminals with a profitable opportunity. Netflix also doesn't provide two-factor authentication, making the hackers' task that little bit easier.

CONTACT FROM STRANGERS

Netflix's Teleparty feature became popular during lockdown periods as it allows users from different households (friends and relatives, for example) to synchronise when they watch content. It requires an access link to be sent to the people you wish to invite; the link, however, can also be distributed to people you don't know. A text chat feature enables interaction with the other users in real-time: this represents a risk to children if a stranger gains access to the Teleparty.

Advice for Parents & Carers

KEEP ACCOUNTS SECURE

Netflix doesn't use two-factor authentication, so a strong password is vital. Your child's Netflix password should be unique (not one they've used elsewhere) and a minimum of eight characters with a mix of letters, numbers and symbols. Emphasise not to share their login details with anyone and remind them to always log out after using the app – so their account remains inaccessible, even if their device is lost or stolen.

SET UP PROFILE PINS

Netflix account holders can lock profiles using a four-digit PIN. Doing this can prevent your child from accessing the wrong account and viewing content that isn't appropriate for their age. Try setting a PIN for each account on your Netflix app – ideally avoiding numbers that would be easily guessed, such as dates of birth. Remember not to share these PINs with anyone, including family.

CHECK MATURITY RATING

Netflix warns about content that includes violence, sex, profanity and nudity. These warnings form part of the show or movie's 'maturity rating'. Users can restrict age ratings to avoid children viewing age-inappropriate content. On their profile, open the Profile and Parental Control settings and choose the maturity level for the shows and movies you want to allow.

SWITCH OFF AUTO-PLAY

When a show or movie concludes, Netflix's algorithms select content with similar themes that it thinks your child will enjoy next. This new content starts automatically after a 10-second countdown. Disabling this auto-play feature reduces the possibility of your child being shown something inappropriate and provides a natural break to help prevent them becoming too immersed in Netflix.

CREATE A KIDS' PROFILE

Setting up a Netflix Kids experience profile means your child can only access content which is suitable for children aged up to 12 years. All other content is automatically blocked. This rating can be further restricted via the child's profile settings. Setting up a Netflix Kids experience profile will help to prevent your child from viewing age-inappropriate content.

CHECK VIEWING HABITS

Netflix has tools which enable parents and carers to monitor what their child has been watching. Selecting 'Viewing Activity' in each profile's account settings displays a list of what content has been viewed (and when). This can reassure parents that their child is watching age-appropriate content and can open avenues for discussing your child's favourite shows and movies, and why they like them.

Meet Our Expert

Dr Claire Sutherland is an online safety consultant, educator and researcher who has developed and implemented anti-bullying and cyber safety policies for schools. She has written various academic papers and carried out research for the Australian government comparing internet use and sexting behaviour of young people in the UK, USA and Australia.



NOS
National Online Safety®
#WakeUpWednesday

Sources: www.help.netflix.com | www.about.netflix.com | www.ofcom.gov.uk



www.nationalonlinesafety.com



@natonlinesafety



/NationalOnlineSafety



@nationalonlinesafety

Users of this guide do so at their own discretion. No liability is entered into. Current as of the date of release: 10.11.2021

Moorlands Christmas Dates

Event	Date	Information
Decoration Day	1st December	Parents are invited to join their children to create Christmas decorations and gifts - whole school
Key Stage 2 Alfresco Carols	8th December (2.30pm)	Join Years 3 to 6 outside to celebrate the festive season
Moorlands Evening Family Carol Service	12th December 6.00pm	Join us at All Saints Church and celebrate together
Year 3/4 Christmas in Rhyme	13th December 9:00 am	Parents are invited to join the Year 3 and 4 children recite their Christmas poems and sing the odd carol along the way
Christmas Jumper Day	14th December	Save the Children fundraiser - whole school
Christmas Dinner	14th December	Children's Christmas Dinner - whole school
The Big Christmas Story Time	14th December (2.30 pm)	Children are invited to bring a Christmas story book to school. Join your child's class at the end of the day for a big family story time.
Christmas Party Day	15th December	Class parties - non uniform for all classes
Year 5/6 Christmas in Rhyme	18th December 9:00 am	Parents are invited to join the Year 5 and 6 children recite their Christmas poems and sing the odd carol along the way
Nursery Nativity	19th December (2:30 pm)	Tickets available nearer the event
Reception Nativity	19th December (9:15 am)	Tickets available nearer the event
Year 1 and 2 Christmas Play	20th December (9:15 am)	Tickets available nearer the event

Peterhouse Christmas Dates

Event	Date	Information
Decoration Day	1st December	Parents are invited to join their children to create Christmas decorations and gifts
Reception Nativity	5th December Times tbc	AM and PM performances Tickets available nearer the event
Nursery Christmas Sing & Share	12th December 9:30am	All nursery children are invited to wear their favourite Christmas outfit and share some of the songs they've learnt.
Christmas Jumper Day	7th December	Save the Children fundraiser - whole school
Christmas Dinner	7th December	Children's Christmas Dinner - whole school
Peterhouse Evening Family Carol Service	7th December 6.00pm	Join us at the local Church and celebrate together
The Big Christmas Story Time	11th December 2.30pm	Children are invited to bring a Christmas story book to school. Join your child's class at the end of the day for a big family story time.
Key Stage 2 Alfresco Carols	13th December 2.30pm	Join Years 3 to 6 outside to celebrate the festive season
Year 1 and 2 Christmas Play	14th December Times TBC	AM and PM performances Tickets available nearer the event
Year 3 / 4 Christmas in Rhyme	18th December 2.30pm	Parents are invited to join the Year 3 and 4 children recite their Christmas poems and sing the odd carol along the way
Year 5 / 6 Christmas in Rhyme	19th December 2.30pm	Parents are invited to join the Year 5 and 6 children recite their Christmas poems and sing the odd carol along the way
Christmas Party Day	20th December	Class parties - non uniform for all classes